



GPU

Product Information

General Purpose Utilities–Print-Image Processing

General Purpose Utilities (GPU) provide a set of data processing tools for simplifying detailed tasks. These stand-alone utilities allow you to lower setup costs, reduce programmer intervention, and decrease turnaround time.

Print Image Processing is the procedure for extracting specified data from a spooled file, manipulating the data, and placing it back into a fixed format ready for printing. Print Image Processing allows you to personalize, reorganize, re-sequence, and add data or images to your newly formatted document. This new print image document is then ready to print to your AFP, IPDS, PCL5 or Metacode printer.

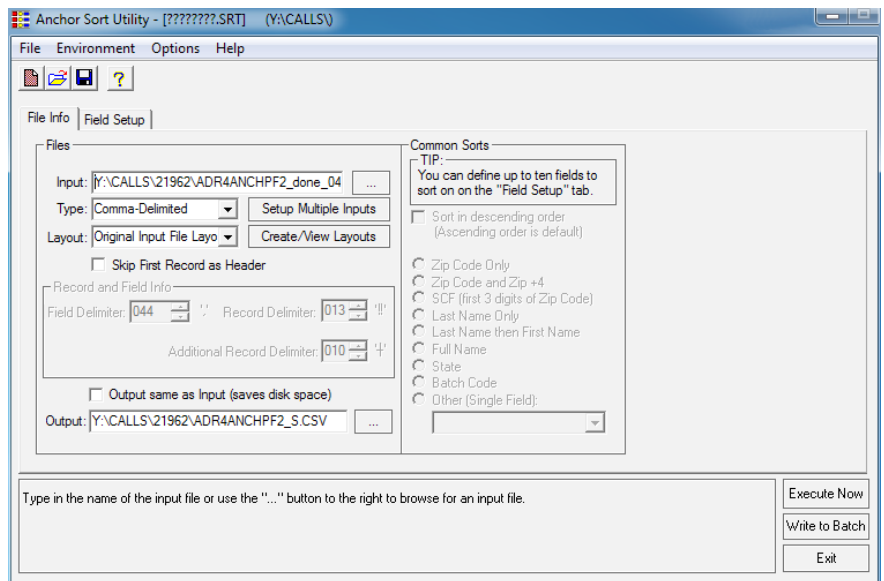
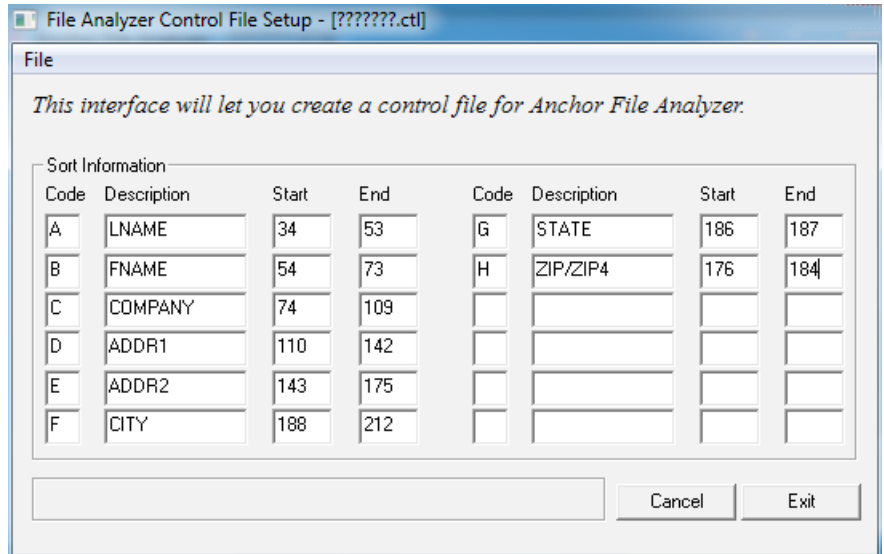
By processing a spooled print image file in this manner, you can take advantage of postal savings while you customize documents.

GPU FEATURES

- Change variable files to fixed length or comma delimited format
- Copy files to insert a carriage return line feed
- Sort files into multi-up (north/south) split format
- Attach PCX images to the end of a file
- Split files by codes and size
- Fast file sort utility
- Produce a file dump
- Create menus for on-site processing
- Switch on break
- File padder utility
- Create a sweepstakes file, and more

PRINT IMAGE FEATURES

- All Points Addressable printing can be used in AFP, IPDS, PCL5, and Metacode environments
- Downloads to high-speed laser printers such as Océ, Xerox, Nipson, IBM and others
- Places text and images anywhere
- Inserts graphics such as images, scanned pictures, signatures, form overlays, and more
- Interfaces with all Anchor Software postal savings products



ANCHOR COMPUTER SOFTWARE

Rockville, MD • Phone 800-237-1921 • Fax 240-631-2104

Plano, TX • Phone 972-881-2424 • Fax 972-881-2324

Email: sales@anchorcomputersoftware.com • P1011

© 2015 Anchor Software, LLC, a non-exclusive licensee of the United States Postal Service®. The following trademarks are owned by the United States Postal Service: CASS, CASS Certified, DPV, eLOT, LACSSM, NCOASM, Postal Service, RDI, United States Postal Service, USPS, ZIP, ZIP Code and ZIP + 4. AD#14.06. Anchor Software (Plano, Texas) is a leading provider of data processing software for the direct marketing industry. For more information, visit the Anchor Software website at <http://www.AnchorComputerSoftware.com>.